



girls
inc.®

**Stronger.
Smarter.
Bolder.**

**Girls Take
the Lead**

**girls
inc.**

of Metro Denver

02
Letter From Our
President & CEO

04
Our Work

13
2019 Results

15
Supporters

21
Financials



From Our President & CEO

Dear Girls Inc. Friends and Supporters,

Thank you so much for contributing to another year of growth and achievement at Girls Inc. of Metro Denver (GIMD)! It is a gift to be part of a community dedicated to inspiring all girls to be strong, smart, and bold. Whether you are a long-standing champion or new supporter, we are grateful for your partnership and excited to share our impact in 2019.

At Girls Inc. of Metro Denver, we know that girls are born innately powerful. Their voice and leadership is evident across all ages and program areas. Last year, GIMD committed to providing new ways for girls to exercise leadership. Partnership with girls allowed us to achieve the following success in 2019:

- Bold Beans Baristas led a campaign to purchase and renovate a new coffee truck
- High Schoolers launched a Teen Leadership Board to guide programs and advocacy work
- Middle Schoolers marched in community events across Denver
- Eurekaans worked in over 40 paid STEM internships at local companies and organizations
- Elementary Schoolers taught peers (and adults) new and unique skills
- Scholars anchored our most successful My Bold Future luncheon to date

In the words of 2019 Girls Inc. Scholarship Winner, Morning Star Yazzie:

"I feel more confident speaking and advocating for myself. I have learned to be more confident in the world, stand up for what I believe in, and I feel like I can be anything I want to be in my future career. My plan is to go to college and return home to help my community."

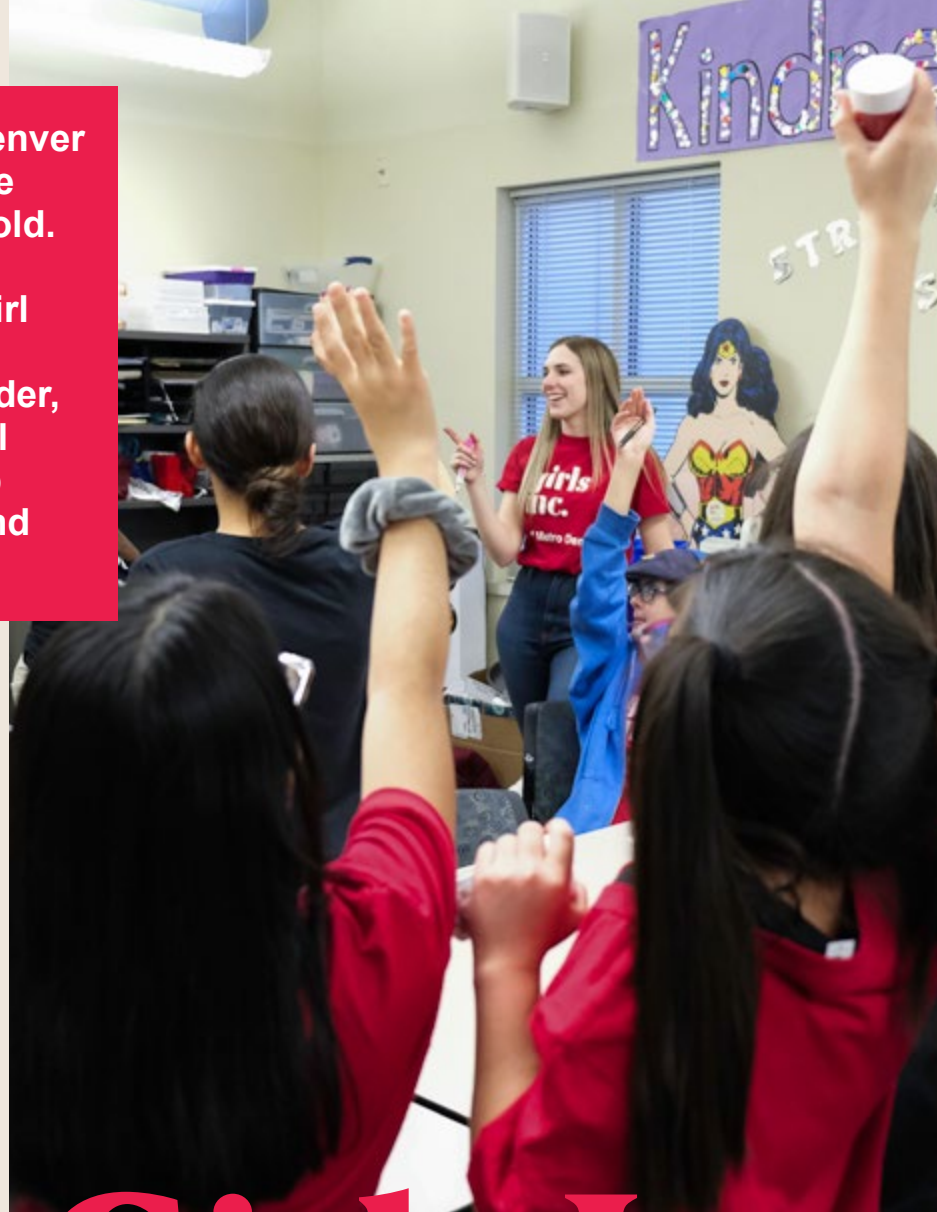
It is clear that when given opportunities, support, and encouragement girls rise. They rise to address challenges and barriers. They rise to speak out for themselves and others. They rise to advocate for issues important to their lives and futures. They rise to achieve high academic goals. They rise to explore innovative career paths. THEY RISE.

As girls rise, we rise with them. We are proud to be 2019's Girls Inc. Affiliate of the Year, which reflects our commitment to impact and growth. In the coming year, GIMD will continue to invest in girls' leadership, expand the reach of our comprehensive programs, advocate for pro-girl policies, and deliver the highest-quality experiences available to girls. We will also invest in building the capacity, infrastructure, and resources needed to sustain growth for the long haul.

We are inspired by our girls – and by all of you. Our partnership with donors, funders, volunteers, and ambassadors is crucial in achieving these goals. Thank you for your investment now and in the future!

In Gratitude,
SONYA ULIBARRI, President & CEO

Girls Inc. of Metro Denver inspires all girls to be strong, smart, and bold. Our comprehensive approach to whole girl development equips girls to navigate gender, economic, and social barriers and grow up healthy, educated, and independent.



The Girls Inc. Experience

Girls Inc. of Metro Denver's positive outcomes are achieved through three core elements: **people** - trained staff and volunteers who build lasting, mentoring relationships; **environment** - girls-only, physically and emotionally safe, where there is a sisterhood of support, high expectations, and mutual respect; and **programming** - research-based, age-appropriate, hands-on and minds-on, meeting the needs of today's girls. Informed by girls and their families, we also advocate for legislation and policies to increase opportunities for all girls.

Girls Inc. of Metro Denver is Stronger, Smarter, Bolder.

Since our founding in 1983, Girls Inc. of Metro Denver has had a singular focus: to equip girls and young women to become strong leaders and reach their fullest potential. We know that when girls are healthy, have the resources and opportunities to learn, and have the confidence and skills to speak out – that is when they succeed.

A recent rigorous comparative study by the American Institutes for Research (AIR) found that Girls Inc. girls have an advantage over their peers in more than 20 key areas. The findings demonstrate that girls not only thrive at Girls Inc., they are also more likely than other girls to see themselves as leaders, with the skills and capabilities of influencing and improving their local communities.



Informed by both the AIR study and an understanding of what is happening in girls' lives, Girls Inc. nationally has set forth *Stronger, Smarter, Bolder: Girls Take the Lead*, with four crucial supports that create the conditions for girls to become strong leaders:

- **The right relationships.** Girls thrive when they have models of success and the perspectives of strong women. Mentors and robust peer networks help girls build positive relationships, be comfortable with networking, and broaden their vision of what is possible.
- **Encouragement to develop and use their voices.** Girls' thoughts and opinions matter. Girls are more likely to build self-confidence, stand up for their beliefs, and believe that they can influence and improve their local communities when we teach them how, when, and where to effectively get their point across.
- **A positive self-image.** Girls must be given the support they need to break free from harmful stereotypes that deflate confidence and hold them back. Successful girls are comfortable with themselves physically and emotionally, and make choices that help them lead satisfying, safe, and healthy lives.
- **Intellectual confidence.** For girls who are ready to lead, education is not just preparation for the next milestone in life. It is a habit of mind that will allow them to be lifelong learners, across all fields.

Plenty of work remains to erase the inequities that prevent girls from reaching their full potential as successful adults and leaders. By focusing on proven strategies and effective advocacy, organizations like Girls Inc. play a crucial role in shaping whether and how our society rises to that challenge in the coming decade. We are thrilled to share with you all the ways that Girls Inc. of Metro Denver girls are leaders in shaping our programs, our futures, and our communities.

“Girls Inc. teaches us skills to be a leader—showing us, and not just telling us how to be a leader. My favorite part of Girls Inc. is in the summer with Ms. Angel. We always do something different, like her Science of Beauty Class. And we do lots of team building games!”
Quetzalli, age 12



Stronger

Girls Take the Lead in Programs

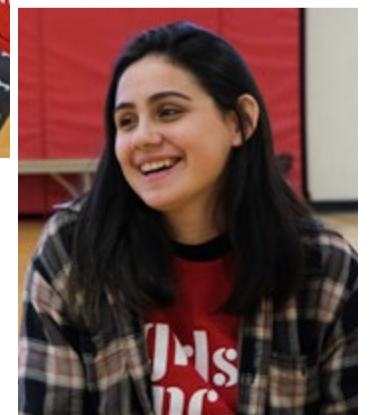
Girls Inc. of Metro Denver served 2,268 girls and youth in FY2019 through Center-based programs and in partnership with local schools and community organizations. Programs incorporate girls at all levels of leadership. This ensures their voices and perspectives shape our work now and in the future.

Elementary School girls initiated weekly peer led activities. Twice per week girls brainstormed an activity to teach, created a lesson plan, and became the instructor for the afternoon. The creativity of the girls was present in every activity they led, including tango lessons and smoothie making!

Middle School girls participated in an advocacy and debate class, which encouraged them to think critically and enhance their public speaking skills. Girls strengthened their voices, learned the difference between opinions and facts, and built awareness for issues important to them and their peers.

High School programs officially launched our Teen Leadership Board (TLB), made-up of ten high schoolers who have formal leadership roles with Girls Inc. of Metro Denver. The TLB provides support in three primary ways: as ambassadors, advisors, and advocates. As ambassadors, TLB members represent Girls Inc. of Metro Denver with stakeholders, donors, and the community. As advisors, they provide ideas and feedback to improve programming. Finally, as advocates, they learn to be change makers and promote girls' rights.

“My favorite part about Girls Inc. is that it is all girls and no boys. It makes me feel safe and I can be silly with my friends. I am fearless because I believe in myself and have more confidence.”
Tori, age 9



“Girls Inc. has given me so many opportunities and allowed me to learn how to lead. There are so many classes and teachers that are open to talking to us and showing us how to lead respectfully, not just by being bossy.” Celeste, age 16

Smarter

Girls Take the Lead in STEM

Girls Inc. of Metro Denver's comprehensive STEM programs are designed to develop girls' enthusiasm and skills in STEM through practical, action-oriented activities. Girls are encouraged to explore, ask questions, persist, and solve problems. Early STEM interest and competency prepares girls for long-term academic success.

Evidence also shows that girls' confidence in STEM subjects influences future career choices. As women continue to be underrepresented in STEM fields, Girls Inc. of Metro Denver emphasizes the importance of ongoing exposure and integrates STEM learning across all grade levels, from early elementary school through college transition.

Eureka!

Girls Inc. of Metro Denver's Eureka! program offers a unique approach to STEM learning. Eureka! incorporates a gender-specific lens to curriculum design and delivers programming over the five years from 8th to 12th grade. This approach encourages girls to build the fortitude needed to conquer the stereotypes and barriers to success they may face. Eureka! addresses girls' specific needs, builds upon inherent strengths, and provides exposure to broad and relevant STEM opportunities. With support, girls develop a willingness to take positive risks and develop social and professional skills to successfully pursue post-secondary educational and STEM career goals.

Creating the Future

In partnership with Lockheed Martin, Girls Inc. of Metro Denver delivers early STEM programming for elementary school girls. Each year girls are introduced to STEM topics, career possibilities, and professionals within that field. During *Rocket Girls*, girls became familiar with planets in our solar system, learned about the relationships between the Sun, Earth, and the Moon, and built and launched rockets at Sloan's Lake!

Imagine Science

Imagine Science is a new Girls Inc. of Metro Denver program, developed in partnership with 4-H, to enhance STEM learning in 4th through 8th grade through hands-on activities. In FY2019, girls learned about the scientific method, developed a hypothesis, and tackled the interdependence of ecosystems. During *What's in Your Water*, girls gained an understanding of nutrient cycles and how they interact with living organisms, including defining eutrophication. They also accurately measured various items (pH, chlorine, etc.) using water test strips. This was followed by an opportunity to design and build their own water filtration systems!

"The Eureka! program has shaped my future so that I know that I could actually be successful in a STEM field, and I wouldn't just be a background scientist that nobody has heard of. I want to be a college professor with a PhD in Biology, specifically speciation, and create a definition of what it means to be a species."
Moira, Eureka Intern



“Bold Beans has prepared me for the future by teaching me new business skills and helping me get out of my comfort zone by learning to communicate and network with people.”
Maricarmen, Bold Barista

Bolder

Girls Take the Lead in Social Enterprise



Girls Inc. of Metro Denver launched its **Strong, Smart & Bold Beans (Bold Beans)** social enterprise coffee business in 2015 in order to provide opportunities for real world work experience and training in a supportive, pro-girl environment.

Bold Beans’ goals are to:

- Provide paid jobs for girls in high school and college.
- Expand entrepreneurial programs and practical learning opportunities.
- Effectively recruit and retain teen participants.
- Build brand awareness for GIMD’s work.
- Develop a sustainable earned income revenue strategy.

In 2019, Bold Beans employed 21 Bold Baristas who earned over \$42,000 in wages and tips. The Bold Beans café at STEAM on the Platte served 15,000 customers and realized a 65% increase in sales compared to the previous year.

Bold Baristas participated in professional development workshops, received financial literacy training, and served in key leadership roles within the business. They also receive competitive pay and work in an environment is comfortable, fun, and supportive.

Bold Baristas are not the only girls who benefit from Bold Beans. Each year, 150 girls participate in social enterprise pipeline programs focused on economic literacy, business development, and entrepreneurship. We encourage girls to be innovative, manage risk, recognize opportunities, and persist. Nearly 30% of GIMD girls will be the first in their families to graduate from high school and 72% will be first generation college students. GIMD is committed to providing all girls with access to the tools and resources needed to be the next generation of female business owners and entrepreneurs.



Bold Beans Coffee Truck Campaign

In 2019, with the support of generous funders led by Mile High United Way’s Women United, Bold Beans expanded to a second “location” – our mobile coffee truck! The coffee truck allows Bold Beans to increase operating hours, employ additional girls in paid positions, deepen community engagement, grow coffee and product sales, and highlight GIMD’s mission and work.

The coffee truck, Espresso, also provides opportunities for girls to explore new aspects of small business development, including business planning, mobile business marketing, product development, customer/location analysis, and social media drivers.

A Special Thank You

to everyone who supported our crowdfunding campaign for the coffee truck!

MILE HIGH UNITED WAY
WOMEN UNITED



DANIELS FUND

integer

Elizabeth Amaral
 Michelle & Will Amerine
 Anonymous
 Phillip Armstrong
 Linda & Pat Brisnehan
 Hugh Brown
 Annie Cordova
 Jackie Devine
 Ginny Durakovich
 Chelsea Early
 Norm & Lisa Franke
 Michael & Tami Frazzini
 Elizabeth & Chad Gardner
 Jenni Gasbarro

Emily Gerrald
 Ethan Godwin
 Jan Harden
 Christopher Harder
 Sara Hazel &
 Dan Goldhamer
 Nancy & Gerard Hickey
 Ariel Knobbe
 Ohlson Lavoie
 Jessica Leary
 Jenny Martin
 Kimberly
 Mendoza-Cooke
 Alain Paolini

Susan Powers
 Anne Powers
 Charlotte Rocha
 Cindy Schonhaut
 Emily Schromm
 Jeslin Shahrezaei
 Stephanie St. John
 Brenda Stewart
 Jamie Torres
 Greg Verzosa
 Marcelle Wall
 Daniel Webb

Girls Lead In Advocacy & Action

67%

of girls believe that they are good at leading others toward a goal

87%

of girls believe that they have a responsibility to improve their communities

89%

believe they can make a positive difference in their communities

87%

of girls make sure that all people are treated fairly

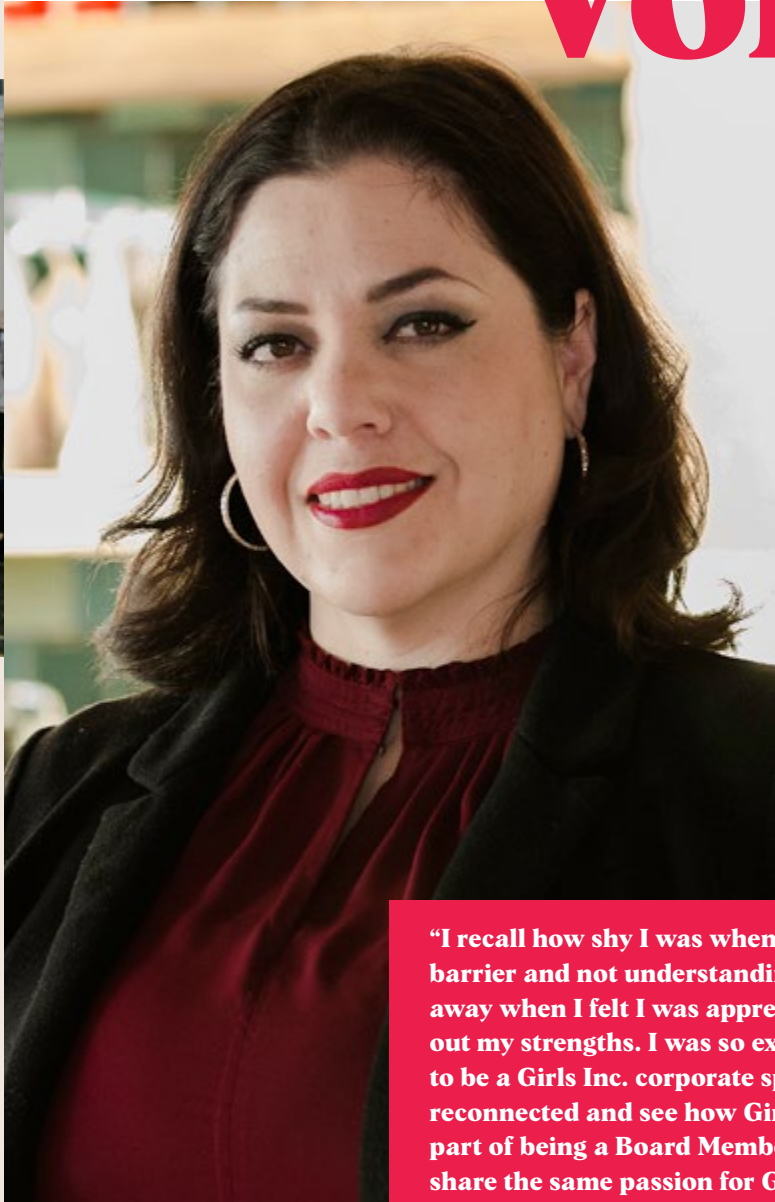


Girls Inc. of Metro Denver’s advocacy programs launched in 2019 with a commitment to advance the rights and opportunities of all girls and eliminate key barriers girls face. Advocacy activities are informed by the lived experiences of girls and center on girls’ voices and leadership. As part of this launch, GIMD formed an Advocacy Committee, participated in local coalitions, and increased training.

FY2019 Advocacy Highlights Include:

- GIMD staff testified in support of Colorado’s Equal Pay for Equal Work Act.
- GIMD Teen Leadership Board member testified in support of Colorado’s Comprehensive Human Sexuality Education Bill.
- GIMD staff, volunteers, and girls participated in multiple city-wide marches, including the Womxn’s March Denver, Martin Luther King Jr. Parade, and the César Chávez Day March.
- GIMD co-hosted an event with Supermajority in Denver, an organization focused on building an intergenerational, multi-racial movement for women’s equity.

Volunteers Lead for Girls



Girls Inc. of Metro Denver is proud of its robust volunteer program that engages hundreds of individuals and partners each year who support program delivery, help with facility needs, and serve in other essential roles. We recruit and train volunteers to create meaningful connections with girls and develop positive youth development skills. In FY2019, over 400 individuals volunteered to serve as program assistants, mentors, board and committee members, and provide administrative and operational support.

Mariza is an alumna of Girls Inc. of Metro Denver and was awarded Girl of the Year in 1993. In FY2019, she served on our Scholarship Committee and soon after joined the Board of Directors. As a GIMD alumna and Wealth Management Advisor with TIAA, Mariza brings a unique and valuable perspective to advance our work and mission. She is also a role model for the girls we serve and a wonderful example of being strong, smart, and bold!

“I recall how shy I was when I first joined Girls Inc. because of my English language barrier and not understanding how I would fit culturally. But that quickly went away when I felt I was appreciated for my uniqueness and was given help bringing out my strengths. I was so excited to find out my employer, TIAA, had decided to be a Girls Inc. corporate sponsor. It was such an exciting opportunity to get reconnected and see how Girls Inc. had evolved since I left 25 years ago. The best part of being a Board Member is being part of a great team of professionals who share the same passion for Girls Inc. and their mission. We are 100% committed to the success of the girls, the programs, and our community involvement. I am so impressed with how much Girls Inc. continues to be a staple within the community and have innovated to continue to positively help shape the lives of our young girls.”
Mariza Bonilla, Girls Inc. of Metro Denver Alumna & Board of Directors Member

2019 Results

9,709
volunteer impact
hours

21
girls in paid barista
positions at Bold
Beans

30
school & community
program partners

\$60,000
awarded in college
scholarships

2,268
unduplicated girls
& youth served

18,200+
meals served

89%
program retention
rate



\$41,000+
wages & tips earned
by Bold Baristas

118,007
Girls Inc. impact
hours delivered

105
girls enrolled in
the Eureka! STEM
program

17
school-based
girls groups
hosted

12
daily transportation
routes from schools
to Girls Inc.

90%
of graduating seniors
pursuing post-secondary
education

47
high school
interns placed

Our Supporters

September 1, 2018 - August 31, 2019

Foundation, Corporate & Government

\$50,000+



Michael & Eleanor
Pinkert Foundation

\$30,000-\$49,000

Adolph Coors Foundation
Comcast NBCUniversal
Kaiser Foundation
Opus Foundation
Tony Grampsas Youth Services
Program
The Anschutz Foundation
The Peierls Foundation
Women United

\$15,000-\$29,999

Ball Corporation & Ball Foundation
Coca-Cola Company
Fox Family Foundation
Franciscan Friars of Holy Name
Province May Bonfils Stanton Fund
Hyde Park & Diamonds in the
Rough Foundation
Leprino Foods Foundation
LibertyGives Foundation
I.A. O'Shaughnessy Foundation
The Denver Post Community
Foundation
The Gateway Fund II
TIAA
United Airlines
U.S. Bank & U.S. Bank Foundation
Xcel Energy & Xcel Energy
Foundation

\$5,000 - \$14,999

Access Management Services, LLC
Colorado Access
Denver Broncos Charities
Do The Bang Thing Salon
Fidelity Investments
Gravitas
IMA of Colorado
Jackson National Community Fund
Lockheed Martin
Merchant & Gould P.C.
Occidental Petroleum Corporation
Paige Foundation
RK Foundation
Rocky Mountain Alliance Children's
Foundation
Rocky Mountain Cable Association
Shaabanand Shekib Foundation
for Children
The Denver Foundation
The Kenneth King Foundation
The Ramble Hotel
Urban Ventures
Virginia Hill Foundation

Gifts Up to \$4,999

Alex and Ani + Energy
Alpine Bank
Amazon Smile Foundation
American Petroleum Institute
ARC Thrift Stores
Beaton Family Foundation
Black Fox Philanthropy LLC
Bonfils Stanton Foundation
Brookfield Properties
Bryan Cave Leighton Paisner LLC
Bumble Bizz
Cambridge Systematics, Inc.
Campbell Foundation Fund
Canopy Advisory Group Inc.
Cardan Capital Partners
Catch & Release, Inc.
CH2M
Charities Aid Foundation of America
Charles Schwab Foundation
CoBank
Colorado Bar Association &
Denver Bar Association
Colorado Convention Center/SMG
Colorado Physician Health Program
Comedy Works
Community First Foundation
Costco Wholesale Corporation
Danone North America
Debra Sutton & Associations, P.C.
DevelopIntelligence
DISH Network
Emily Schromm LLC
EnCana Oil & Gas Inc.
Garver Gives
Golden Prairie
Google, Inc.
Great West Life & Annuity
Insurance Company
GRID Impact
Group One Ventures, LLC
HealthOne CO
HR Consultants of Denver
Innovest Portfolio Solutions
Integer Group
Janus Henderson Foundation
Johns Manville
Junior League of Denver

Kiely Family Foundation Fund
Kroger Co. Foundation
Lele Sadoughi Designs
Lewis Roca Rothgerber Christie LLP
M.A. Mortenson
Macquarie Group Foundation
McKinsey & Company
Microsoft Corporation
Moore, Inc.
Neisen Borth Insurance Agency
Nelnex, Inc.
NREL
One Wild
OneHope Foundation
Oppenheimer Funds
Pinnacol Assurance
Qualcomm
Quiat Companies LLC
Raymond James
Ready Foods Incorporated
Red Robin Gourmet Burgers, Inc.
Rose Community Foundation
Ryan Gunsauls & O'Donnell, LLC
S&P Global Foundation
Salesforce & Salesforce Foundation
Shop Shea
Snell & Wilmer
Spinster Sisters Co.
Stone + Consulting Inc.
Stratagem PC
Superate Mujer Community
Sutton Booker Professional
Corporation
TalenTrust LLC
The Colorado Trust
The Harmes C. Fishback
Foundation Trust
Cate & Justin Croft
Laura Dean
Katie DeBord
Julie Frosh
Juliet Garcia
Jennifer Glyphis
Terri Gomez
Lisa Gonzales
Dingli Graham
Jamie Hadley
Elizabeth & Kenneth Haughey
Ann Hauser
Sara Hazel & Dan Goldhamer
Paige Hennen

Champions for Girls

Members are individuals who contribute \$1,000 or more in direct financial support (separate from event table, ticket, or auction purchase) making it possible to create long-lasting, positive change in the girls we serve.

Michelle & Will Amerine
Anchor Point Gift Fund of
Bradley A. Feld & M.
Amy Batchelor
Anonymous
Virginia & Rob Bayless
Jeffrey Berthold
Frankki Bevins
Stacey Bledsoe
Brooke Brandt
Joan Brennan
Linda & Pat Brisnehan
Dr. Eliza Buyers &
Dave Pinkert
Stephanie Chichester
Catherine Clements-
Matthews
Colleen Colarelli
Kelly Condon
Cody Lynn Daniels
Davis Family Fund
Lisa De La Garza

Caryn & Brian Deevey
Ingrid DeGreef
Theresa Donnelly
Stephanie Donner
Sarah Early
Erin Eastburn
Richard Ehrman
Jennifer Engle
David Farmer & Gay Faris
Norm & Lisa Franke
Michael & Tami Frazzini
Federico & Cindy Peña Fund
KD Frueh
Virginia Fuller
Elizabeth & Chad Gardner
John Graff
Patrick Graham
Green Waves Fund
Barbara Gregorich
Jennifer & Dan Grooters
Elizabeth B. Hampton
Lisa Harris

Kimberli Haverly
Herbert & Judy Paige Family
Foundation
Catherine & Graham Hollis
JD & Kelly Holt
Heather Hope
James Hoy
David Ickovic
Guy James
Diane & Larry Jensen
Dr. Joan Foster
Brad Kaplan
Tracy & Gary Kerr
Bruce Kiefer
Molly & Taylor Kirkpatrick
Patricia Kist
KJ Community Fund
Eugene Lee
John Lee
Melissa Lester
Heather & Jordan Lipp
Colleen & Ned Mackey

Gerald Mamrol
Bill & Cathy Marlin
Victoria McCarl
Katie Joe McDonough &
Michael Blaskowski
Kimberly Mendoza-Cooke
Erin & Andy Miller
Elaine Morrow
Nancy & Robert Schulein
Fund
Robert & Judi Newman
Stacy Ohlsson
Rebecca Olchawa-Barker
Griffen O'Shaughnessy
Lori Palazzolo
Alain & Kelly Paolini
Tiffany Payne & Matt Mann
Michael & Leah Pytel
Natalie Rekstad
Audrey Rowe
Steven & Victoria Sanborn
Shannon Saviers

Edward Sawyer
Emily Schromm
Megan & Marc Scremin
Bijal Shah
Eileen Sharkey
Scot Smith &
Susan Blake-Smith
Teresa & Timothy Smith
Alice & Tom Stephens
Tedd & Jane Stewart
Bridget Sullivan
Kristy Taddonio
Deborah Takeuchi
Traci Jim Family Fund
Ashley Tulp
Sonya & George Ulibarri
Linda Wackwitz
Marcelle Wall
Alyssa Weber
Amy Winsor
Alexis & Jim Wooll
Patricia A. Yingst

Individuals

\$500 - \$999

Anonymous
Mike Bearup
Trisha Burns
Sherry Bursey
Elizabeth Coughlin
Cate & Justin Croft
Laura Dean
Katie DeBord
Julie Frosh
Juliet Garcia
Jennifer Glyphis
Terri Gomez
Lisa Gonzales
Dingli Graham
Jamie Hadley
Elizabeth & Kenneth Haughey
Ann Hauser
Sara Hazel & Dan Goldhamer
Paige Hennen

Marillyn Hewson
Lindsay Jaffee
Joyce Kelly & Pat Miller
Alyson Kempton
Kiely Family Foundation
Marcee & Rick Kinning
Viral Kothari
Janet Lowe
Mashenka Lundberg
Jill & Colin Mant
Sarah Marsh
Marla Martin
Pam McCoy
Stephanie Ohnigian
Salwa Owens
Kelly Perkins
Angie Pohl
Rick & Kay Poston
Chris Ramos
Joni Roberts
Molly Samson
Sarah Schneider
Cindy Schonhaut
Susanna Shannon
Jean & Ted Simon

Roy Smith
Adam Sohn
Mimi Stevinson
Kirstin Stoll-DeBell
Cori & Tyler Streetman
Christopher Treado
Shanda Vangas
Anna Walsh
Courtney Ward
Elizabeth Winchester
Lou Ann Witter

\$250 - \$499

Matt Agee
Glenda Alexander
Jennifer L. Allen
Laura Anderson
Anonymous
Alex Artio & Dr. Chris Nyquist
Jennifer Barrow
Jeffrey & Tracy Baumgartner
Brooke Bearman
Cristina Bejarano

Jim & Sally Bernsten
Jennifer Bielak
Stephanie Blake
Hugh & Lynne Brown
Linda Brown
Santiago Bulnes
Michael Byrne
Renee Calanan
Trista Caldwell
Michael Cawood
Gabby Crosby
Cynthia David
Lauren Davis
Sarah Davis
Peter Debooy
Molly Dimond
Carrie Dyer
Laura Fitch
Alyssia Fotenos
Jenni Gasbarro
Savita Ginde
Theresa & Robert Goldhamer
Elizabeth Gonzalez
Suzanne Griffi
Gillespie Guethlein

Edward Hallen
Veronica Hayden
Mark Hennesy
Genia Herndon
Adelina Herrera
Sara & Josef Hoelscher
Dorothy Horrell
Carol Hunter
Bridget Hurley
Wenda Huseman
Nicci Jaccoud
Pam Jansma
Kelly Johannsen
Shaina Jordan
Jill Kahn
Kelli Kasik
Jill Kenney
Janet Kenny
September Kondas
Stephanie Larson
Maryanne Lavan
Ohlson Lavoie
Gaddi Layden
Bruce Litchfield
Sharon Magnus

Our Supporters

September 1, 2018 - August 31, 2019

\$250 - \$499

(Continued)

Ed & Marianne Marvez
Anne McCarthy
Wendy McCray-Benoit
Kendi McDaniel
Elizabeth McDermoot
Melissa McHugh
Susan McPhillips
Sarah Mercer
Michael & Julie Mills
Thomas Mirek
Lisa Mitchell
John W. Mollard
Donna Crafton Montgomery
Jessica Moore
Raime Leeb Muhle
Kathleen & Ted Ott
Monica Palko
Lois Paul
Sonia Phares
Tamela Phillips
Andy Pouzeshi
Susan Powers
Kimberly Ramalho
Sylvia Reynolds
Durban Ripley
Barry Rumack
Scott & Gretchen Saunders
Ashley Schubert
Nicole Sherman
Amy Smith
Dan Spoor
Mark Stewart
Tonga Stimpson
Kelly & Trevor Stone
Mary Sturtevant
June Taylor
Lexi Tehven
S. Lee Terry Jr. &
Kathryn Sullivan Terry
Beth Toth
Rhonda Valladares
Denise Vega & Matt Perkins
Marisol Villagomez
Megan Von Wald
Cheryl Walker
Marcie Wallen
Lucinda Willard
Rachel Williamson
Blair Wulschlager

\$100 - \$249

Jody Alderman
Cheryl Alspach
Diane Amdur
Anonymous
Scott Arnold
Azine Askarinya
Katherine Bailey
Kristen Banger
Caroline Barajas
Jill Barkin
Keturah Baxter
Joy Benenson
Kathryn Bentfield
Erica Bertschy
Francine Bis
Melina Bixler
Donna Blair
Kathleen Bohland
Carol Bowar & Ted Halbert
Amy Brenton
Angela Brohman
Diane Brown
Karyn Browne & Ken Seeley
Dorian Brugger
Rebecca Bullinger
Carol Buyers
Shalifa Cambrelen
Brittany Cameron
Leon Cerna
Emily Charlesworth
Liv Charpie
Sue Cho
Janet Christopher
Cindy Cookson
Jan & Miles Cortez
Doug & Sharon Craig
Jamie Crain
Shayna Cramer
Roy Crawford & Tamra Lack
Deseraï Crow
Jon Crump
Sharon Dafondanouto
Angela Davidson
Andrew Davis
Shanna Davis
Rebecca De Sa
Mali Deasy
Shari & Don Degryse
Kaitlin Delaney

April Denmon
Jackie Devine
Dannie Dilonno
Helen Drexler
Anne Dunlap
Crisanta Duran
Janis Emanuel
Ericka Englert
Scott Evans
Kristen Farrell
W J Fleming
Sandra Fleming
Paul Forward
Katie Fritchen
Lauren Fulton
Debbie Gadomski
Barbara Galbreath
Georgia Gallagher
Marybeth Gallagher
Diana & Candelario Garcia
Amanda Gash
Landon Gates
Lauren Gaylord
Robert Gerou
Emilie Gettliffe
Dorian Gibbs
Dani Gilady
Robin Gingerich
Rebecca Gorrell
Sarah Graham
Amy Green & Steve Folse
Patricia Green
Scott & Patricia Green
Rebecca Grupe
Sharyn Guhman
Melissa Halverson
Simon Hambidge
Forrest Hancock
Carrie Hanson
Sarah Hartley
Marianne Hayes
Diane & Michael Hazel
Nina Hein
Rufina Hernandez
Nancy & Gerard Hickey
Jane Ingalls
Kasia Iwaniczko-MacLeod
Virginia Jaccaud
Monica Jaccaud
Kim Jacoby
Ginny Jacquard

Yukiko Jones
Andrea Jucha
Noname Kadusale
Iwona Kasica
Kathleen Kelly
Amy Keltner
Loretta Kennedy
Sally Kennedy
Vanecia & Kevin Kerr
Sarah Keys
Kristen Knudsen
Andria & Eddie Koen
Nancy Koontz
Kathryn Kubala
Mark Kvasnak
Jessica Lambuth
Cora & Gary LaPlante
MaryBeth Lawson
Kathleen Lenarz
Johanna Levene
Daniel Lillie & Emily Kuo
Paul Lopez
Caroline Lowsma
Colleen Lucksinger
Susan Luerssen
Dana Lunning
Heather Lurie
Rachel Lynn
Donna MacConnell
Jacob Mackenzie
Craig Mackiewicz
Geoffrey Maduzia
Joanne Martin
Carlos Martinez
Amanda Mattheis
Colleen McGrath
Taylor & Colleen Mcllvennan
Lindsay McKae
Amber McReynolds
Janet Meyer
Nicole Miller
Kristine Miller
Michael Minerva
Kristi Miniello
Sara Mogharabi
Alana Moritz
Jennifer Morris
Stephen Mueller
Jack Murphy
Peggy Nelson
Alex Novoselsky
Leslie Oliver
Dave Olschansky
Brea Olson
Keegan O'Neil
Kate Oravez
Barbara O'Shaughnessy
Tom Owen
Erin Parker
Betsy Peterson & Nick Holland

Linda Piccolo
Dan Pleshko
Daniel Pleshko
Becky Porter &
Dana DeMoulin
Dan Potter
Janine Pryor
Erin & Rich Pulling
Yolanda Quesada
Erin Ramaker
Charleen Ramirez-Mares
Saira Rao
Diane Reed
Brianna Reis
Beth Robinson
Charlotte Rocha
Eldene Ronnekamp
Barry Rosenberg &
Lee Fisher-Rosenberg
Simone Ross
Shelby San Nicolas
Cristina Schmidt
Thomas Scholefield
Krystal Schulz
Lisa Sevcik
Jeslin Shahrezaei &
Eugene Rooks
Kaye Siemers
Sarah Silva
Beverly Sloan
Blanche Smith
James & Rita Smith
Maren Stewart
Lauren Stiefler
Lori Strand
Steve & Stephanie St. John
Benjamin Strawn
Susy Tamminga
Laura Tellez
Nate & Heather Thompson
Mark Thompson
Elaine Torres
Cynthia Treadwell
Kara Veitch
Leah Vescovi
Lydia & Modesto Villalobos
Kathleen Quinn Votaw
Austin Vrbas
Jean Wallace
Debbie Watts
Daniel Webb
Lara Weiler
Eric Weisman
Carly West
Melissa White
Stefanie Winfield
Karen Landers Zeile
Karen Zink

\$1 - \$99

Christina Adamson
PJ Adler
Elizabeth Amaral
Anonymous
Phillip Armstrong
Karl Baines
Rebecca Barry
Lisa Bartnicki
Elizabeth Bearman
Sydney Bell
Xiaomei Bergstrom
Kristen Blessman
Andrea Borchers
Nancy Brandt
Rachel Breck
Jennifer Brice
Wendy Browning-Lynch
Shannon Brummett
Caroline Burnett
Sara Butler
Michelle Carr
James Carr
Stefanie Carroll
Brandon Carson
Karmen Carter
Lori Casillas &
Gilberto Munoz
John Caylor
Annie Cordova
Karen Crain
Kristin Crockett
Arlene K. Cumming
Kathleen Cunningham
Holli Dahmen
Heather Daniel
Tiffany Dashiell
Cori Deterding
Wendy DiBiasi
Allie Disken
Meghan Dougherty
Paul Dreyer
Ginny Durakovich
Kathy Earl
Chelsea Early
Marina Eden
Norma Escobar
Lindsay Faeder
Maggie Fajkus
Diane Fallon
Margaret & Peter Fee
Terri Fisher
Maegen Fisher Family
Vicki Flaherty
Nika Folse
Marti Freeman
Sarah Galaro
Cynthia Gallegos
Sofia Garcia

Jennifer Garner
Kylie Garrity
Gregory Gentry
Emily Gerrald
Sarah Gieringer
Ethan Godwin
Shari Gordon
Roberta Greengard
Morgan Griego
Karen Griffen
Cynthia Guitierrez
Dusti Gurule
Lindsey Guthals
Angel Gutierrez
Sabrina Gutierrez
Jennifer Haggard
Alice Dills Hardenburgh
Jan Harden
Christopher Harder
Carly Hare
Caroline Harrison
Elizabeth Betty Heid
Rhannon Hendrickson
Keri Hendrickson
Susan Henry
Amy & Michael Hinton
Molly Hollern
Carrie & Bryan Horn
Christopher Hueffle
Julia Hughes
Amber Humphry
Arash Jahanian
Kristin Johnson
Philip Jones
Anna Jones
Eliza Kelly
Nicole Kinney
Jenni Kirstein
Shane Kleinstein
Christy Kline
Gina Knaack
Ariel Knobbe
Andrea Koppenhofer
Jennifer Kramer
Kristina Krause
Leslie Lane
Jessica Leary
Latrice Lee
Hap Legg
Piper Leitz
Michael Lenarz
Kayla Lorentz
Jill Lucero
Tina Marsh
Jenny & Ethan Martin
Sonya Martin
Juana Martinez
Stepan Mazurov
Sari Mazzurco
Margie McCarthy

Jami McDowell
Sarah McGill
Erica Mcintire
Christine McPhaul
Kristine Millich
Anne Modler
Mary Monner
Cecelia Muir
Marsha Nelson
Amber Newberry
Suzanne Nishi
Lisa Nordstrom
Randall Ohlson
Lucero Olague
Alex Oves
Donna Paderewski
Eileen Papazian
M. Julie Patiño
Lindsay Paul
Meghan Pearson
Linda Peri
Laura Perlov
Patricia Peterson
Autumn Phillips
Alison Friedman Phillips
Clara Pilcher
Anne Powers
Brandy Radey
Kathleen Ranwez
Miriam Reed
Maureen Reilly
Laurie A. Rhoades
Jennifer Richardson
Danielle Richey
Jordan Roberge
Alicia Rogers
Marcia Romero
Sarah-Joan Rothloz
Nina Roumell
Aisha Rousseau
Megan Rusk
Ashlee Sanchez
John & Carol Sass
Brittany Schoede
Peter Schoelzel &
Andrea Garcia Schoelzel
Melissa Schoenfeld
David Scholtz
Cecile Schultz
Kenn Seaman
Barbara Seidl
Dr. Sharon Sharon
Shelley Shea
E. Stephen Shriver
Jessica Sievers
Daniel Skiff
Christy Smith
Maria Solano
Sara Spalding
Christine Sprague

Sarah Stabio
Katherine Steinberg
Tami Steine
Brittany Stevens
Brenda Stewart
Kristine Strain Ingraham
Jennifer Szaltzer
Tony Tapia
Chantell Taylor
Theresa Taylor
Sheila Thompson
Jamie Torres
Marjorie Tweedy
Rachel Tydlacka
Mel Ulle
Ivonne Van Wyk
Danielle Varda
Greg Verzosa
Lindsay Paul
Heather Walker
Justin Wauthier
Marisa Way
Gina West
James White
Shelby Wieman
Douglas Williams
Tara Williams
Christian Williss
Tessa Wilson
Tracy Witherspoon
Amy Woolen
Phyllis Yetske
Caitlin Mercier

In-Kind

5280 Publishing, Inc.
Access Destination Services -
Gaylord Rockies Resort
Adams Mystery Playhouse
AEG Presents - Rocky
Mountains
Anheuser-Busch
Arapahoe Basin Ski Area
Barbara Klika
Barre 3 - Cherry Creek
Basecoat Nail Salon
Becky Marquez
Beet and Yarrow
Bistro Barbès
Blanchard Family Wines
Blue Horseshoe Solutions
Buzz Brothers Band
Canvas and Cocktails
CHAC Gallery
Clyfford Still Museum
CoBank
Colleen & Ned Mackey

Colorado Ballet
Comcast Cable
Denver Nuggets
eBags
Edible Beats
Elite Brands of Colorado
Elizabeth & Chad Gardner
Emily Schromm LLC
Fatima Moumen
Gary's Auto Service
Glosshouz
Goldspot Brewery
Greg Cradick
Havenly
Heidi Ott
Hotel Teatro
HR Consultants of Denver
Integer Group
Jasmine Geverts
Jen Ross Productions
Jenny Stefanov
Kacey Bennett Studio
Kaleen Brentlinger
Kathy Lenarz
Kristin Dolezal
La Rumba
Leopold Brothers
Lindsay Weinberg
Little Man Ice Cream
Lou Ann Witter
Magnify Signs
McNeil Designer Portraits
Michelle Garcia
Michelle Lansfield
Movement - Baker
My Make Studio
Nicole Henderson
Nocturne
Panzano
Phia Alchemy Salon & Spa
Pilates Evolution
Pure Barre
Salon Rosalee
Samantha Park
Sarah Marsh
Spavia Lowry Town Center
Stacy James
Stout Street Hospitality/
Magnolia Hotels
Susanna Larsen
Susy Tamminga
Taylor & Colleen Mcllvennan
The Lumineers
The Maven Hotel
Tina Azevedo
Tod Fenner
Tomonto Household
Topo Designs
University of Colorado WIMS
Walter James Reilly

Our Supporters

September 1, 2018 - August 31, 2019

In-Kind (Continued)

Waterway Carwash
Wonder Escapades
Work & Class

Volunteers

Maricela Aguilar
Paola Aguirre-Banuelos
Marah al Rashid
Jett Amchin
Alezia Anderson
Lily Astudillo
Alyssa Avila
Kori Baker
Shelby Bank
Erica Barillari
Lisa Barker
Marirose Bernal
Kayla Berndt
Phoebe Brache
Melanie Braidich
Morgan Briere
Narmeen Bugrara
Jackie Carrier
Tori Carroll
Itzel Cervantes
Mary Blake Chandler
Kelli Colter
Hayley Conley
Myiesha Contreras
Rebecca De Sa
Alex DeMartino
Rich DeRoy
Jennifer DeSouchet
Alexandra Dickerson
Kalai Donner
Molly Dowds
Crystal Duncan
Hawa Fahn
Lauren Falicia
Sofia Fiocchi
Jennifer Flores
Eilish Forward
Diana Foster
Stefanie Francis
Erica Fukuhara
Emma Garcia
Jane Ghublikian

Alexis Gonzales
Macy Gosch
Anne Grau
Erica Green
Jessica Hamilton
Abby Hammer
Sarah Harris
Theresa Hauser
Deneshia Hearon
Lindsey Hendon
Caroline Hickey
Ariel Jaramillo
Katherine Jarvis
Diane Jensen
Imani Jermany
Monica Juarez
Anisha Kalla
Raonak Kamal
Melissa Kitlitz
Caroline Klein-Callea
Yuka Kodani
Maddie Koppenhofer
Rosemary Kufalk-MacFall
Mariana Kuker
Amber Landrum
Francesca Lawrence
Nikita Lee
Stephanie Lee
Josefa Leon
Arianna Leslie
Elana Lewis
Grace Liu
Elena Lobato
Joe Loo
Adamari Lopez-Ramirez
Alyssa Lozano
Karla Macedo
Alyssa Mader
Citlali Mares
Lizzy Maroncelli
Emily Marshall
Casey Martin
Eliska Martinez
Jennifer Martinez-Garcia
Kaitlynn McCormack
Diane Mereles
Mary Metropulos
Gianna Michaelson
Allison Mis
Megan Mitchell
Meghan Mitchell

Asia Montoya
Eliz Moore
Diana Morales
Celica Munoz
Maggie Nelson
Michelle Neuenschwander
Hayley Obremski
Victoria O'Hare
Stacy Ohlsson
Amy Onwudinanti
Aleka Pappas
Leah Parsons
Shyamal Patel
Morgan Patterson
Mackenzie Peckham
Kami Procop
Amanda Rakes
Arina Rakytianska
Marianne Realle
Tabatha Reese
Troi Rimpson
Alice Roberts
Lily Rodriguez
Izzi Romero
Yendi Ronquillo
Jen Ross
Rhea Rowan
Khaili Rowan
Mindy Sandoval
Madeline Scarborough
Leah Schmidt
Chloe Shaw
Katie Showalter
Carsen Sikyta
Emily Singer
Vicki Strand
Breshay Strong
Shuniti Taddese
Jaclyn Tagani
Laura Tellez
Isobel Thieme
Michelle Torres
Bella Trillo
Racheal Ushindi
Yaneth Vazquez
Eva Vega
Evynn Vondersmith
Kelsie Wallace
Angela Watson
Mackenzie Welchert
LouAnn Witter

Elexia Wright
Mary Wright
Hossna Yasini
Emily Yea
Anissa Yip
Morgan Yost

Volunteer Groups
Ball Corporation
Chi Omega
Comcast NBCUniversal
DaVita
Deloitte
DISH
Fidelity Investments
Junior League of Denver
Lockheed Martin
Love Your Melon
Merchant & Gould
M. A. Mortenson
Nelnet
Pinnacol Assurance
Subaru
Xcel Energy

Community Advisors

Micki Amerine
Jim Bernsten
Mariza Bonilla
Ranmali Bopitiya
Kelly Collins
Jackie Devine
Sabrina Espinosa
Michelle Garcia
Dingli Graham
Amy Green
Erica Green
Kelsey Green
Becky Grupe
Farren Henry
Chris Homolac
Carrie Horn
Nicci Jaccaud
Mary Ellen Jackson
Nicole Kinney
Jessica Leary
Laura Mersman
Keegan O'Neil
Kathleen Ott
Diane Padalino
Lori Palazzolo
Leslie Reed
Ann Rhoads
Jill Rhodes
Teresa Smith
Kristin Stoll-DeBell
Cori Streetman

Lauren Tew
Carmel Ulbrik
Cristina Uribe Reyes
Joanna Vosburg

Partner Schools

5280 High School
Center for Talent
Development (CTD)/
Greenlee
Cheltenham Elementary
School
Cole Arts and Sciences
Academy
Collegiate Prep Academy
Compass Academy
Cowel Elementary School
Denver Center for
International Studies:
Denver (DCIS)
Denver School of the Arts
Dr. Martin Luther King, Jr.
Early College
DSST Byers Middle School
DSST Middle School Noel
Campus
East High School
Florida Pitt Waller
Girls Athletic Leadership
School (GALS)
Godsman Elementary School
Graland Country Day School
Kunsmiller Creative Arts
Academy
Lake International School and
STRIVE Prep Lake Campus
Maxwell Elementary School
Morey Middle School
New Legacy Charter
Newlon Elementary School
Operation HOPE, Inc.
Ricardo Magon Flores
Academy
Rocky Mountain Prep:
Berkeley
Rocky Mountain Prep:
Creekside
Rocky Mountain Prep:
Southwest
St. Rose of Lima Catholic
Academy
Stevens Elementary School
STRIVE Prep - Kepner Middle
School
The Bridge Project:
Columbine
The Bridge Project:
Westwood

Program Partners

9News
Alliance Center
Allison Moran Meditation
Arts Students League of Denver
Ball Aerospace
Bikes Together
CityWild
Colorado College
Colorado State University
Comcast NBCUniversal
Community College of Denver
Creative Visions
Culture Energized
DaVita
Deloitte
Denver Botanic Gardens

Denver Children's Museum
Denver Museum of Nature
and Science
Denver Office of Children's Affairs
Denver Parks & Recreation
Denver Public Library
Department of Human Services
Do the Bang Thing Salon
Downtown Aurora Visual Arts Center
Fidelity Investments
Food Bank of the Rockies
Integer
Junior Legaue
Kroenke Sports
Leprino Foods
DaVita
MedCAD
Merchant & Gould

Metropolitan State University
of Denver
Mortenson Construction
National Oceanic &
Atmospheric Association
Pinnacol Assurance
Planned Parenthood
Ready, Set, College!
Regis University
Revolar
Spinster Sisters Co.
St. Mary's Academy
Steve Spangler, The Science Guy
TARRA
The Blue Bench
The Denver Nuggets
The Performance Collaborative
Think Like a Genius Foundation

United Airlines
United Airlines Pilot Training Center
University of Colorado - Denver
University of Colorado at Boudler
University of Denver
University of Northern Colorado
University of Wyoming
Visible Network Labs
Wings Over the Rockies Air &
Space Museum
Xcel Energy
YouthBiz

Design by The Kin Collective

Photography by Jen Ross

Board of Directors

ALAIN PAOLINI, CHAIR
*Business Transformation & Change
Management, HCL Digital & Analytics*

SARAH RIECKE EARLY, PSY.D,
SECRETARY
*Executive Director, Colorado
Physician Health Program*

COLLEEN MACKEY, TREASURER
*CEO/Managing Member,
Flex Assets LLC*

SONYA ULIBARRI
*(non-voting) President & CEO,
Girls Inc. of Metro Denver*

STACEY BLEDSOE, *President,
HR Consultants of Denver*

KELLY CONDON, *Director of Global
Diversity & Inclusion, Lockheed Martin*

LAURA FITCH, *Chief Development
Officer, Rocky Mountain Adventist
Healthcare Foundation*

DR. JOAN FOSTER, *Professor,
Biology, Metropolitan State University
of Denver*

LISA DE LA GARZA, *Vice President,
HR Operations, Analytics &
Compensation, Comcast NBC
Universal*

KATIE DEBORD, *Partner and Chief
Innovation Officer, Bryan Cave*

STEPHANIE DONNER, *Executive
Director, Emily Griffith Technical
College*

MIKE FRAZZINI, *Chief Technology
Officer, eBags*

ELIZABETH GARDNER,
*Social Investment Representative,
Xcel Energy*

LISA GONZALES, *Founder &
Principal, ELKALYNE*

BARBARA GREGORICH,
*Senior Vice President Human
Resources, Leprino Foods*

HEATHER HOPE, *Personal
Branding Expert & Franchise
Owner, House of Colour Denver*

ANDRIA KOEN, *Business Intelligence
Analyst, Colorado Access*

PAUL LÓPEZ, *Denver County
Clerk & Recorder*

JILL MANT, *Realtor,
Live Urban Real Estate*

KIMBERLY MENDOZA-COOKE,
*Senior Municipal Planning Analyst,
Occidental Petroleum*

GRIFFEN O'SHAUGHNESSY,
*Co-President, Canopy Advisory
Group*

EDWARD SAWYER, *General
Manager, Cerapedics*

BIJAL SHAH, *Chief Product &
Analytics Officer, Guild Education*

MARCELLE WALL, *Senior Strategic
Account Executive, Salesforce*

Emeritus Board Members

LINDA BRISNEHAN, *Retired, Lockheed
Martin Space Systems*

ELIZA BUYERS, M.D.
*Pediatric and Adolescent Gynecology,
Children's Hospital of Colorado*

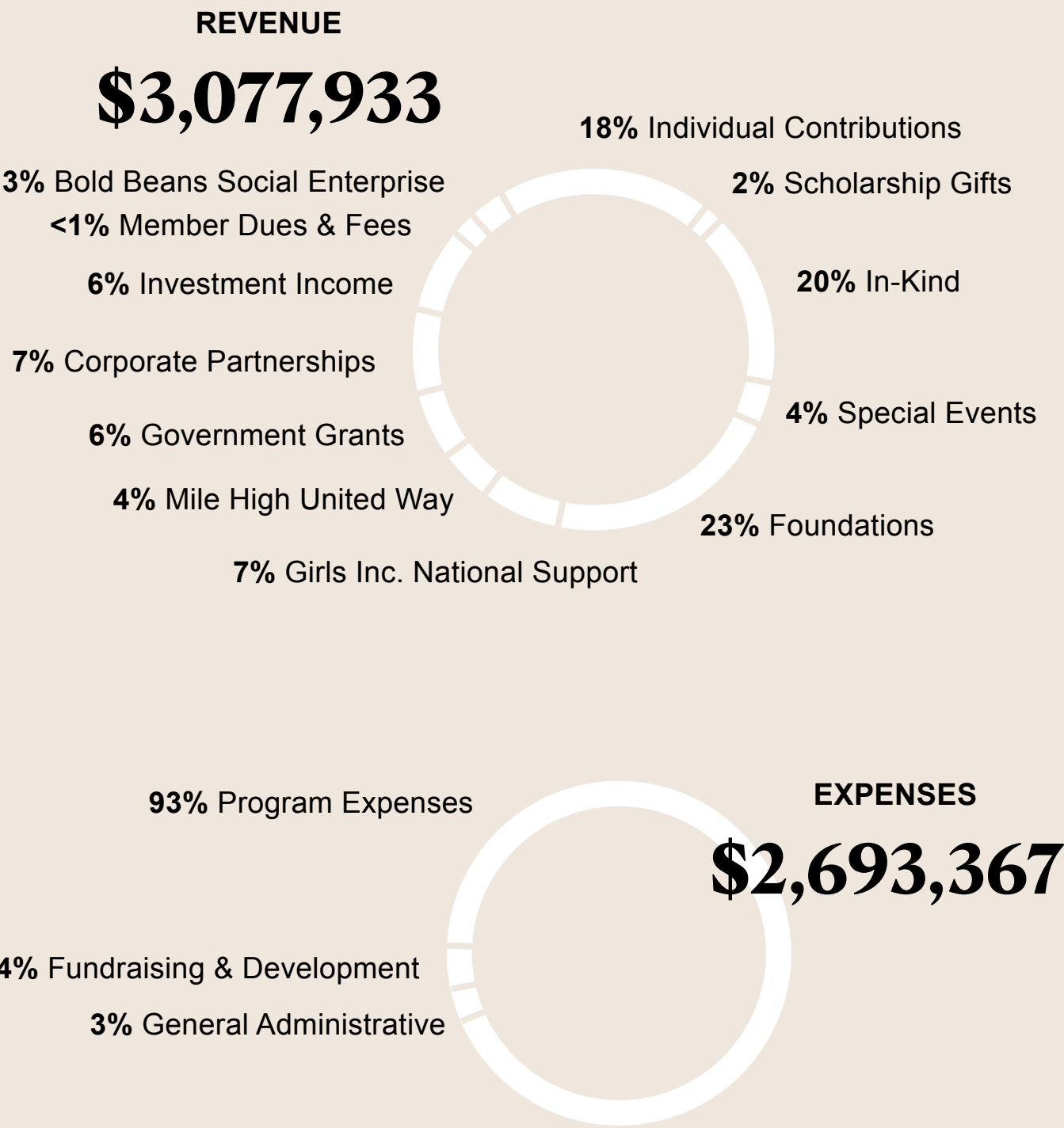
THERESA DONNELLY, *Past Chair
Senior Manager, Communications,
Black Hills Energy*

PAM MCCOY, *Metrics and Performance
Management, CentryLink, Inc.*

September 1, 2018-August 31, 2019

Financial Statements

Assets	2018	2019
Cash & Cash Equivalents	253,417	231,455
Restricted Cash - Scholarships	-	214,761
Grant & Fees Receivable	41,110	77
Investments	4,764,576	4,689,534
Prepaid Expenses & Other	41,410	44,713
Land, Property & Equipment	2,236,602	2,260,601
	\$7,337,115	\$7,441,141
Liabilities		
Accouts Payable	14,561	21,132
Accrued Payroll & Related Benefits	74,318	89,824
Other Liabilities	-	-
Long-Term Liabilities	-	-
Deferred Revenue	100	30,370
	\$88,979	\$141,326
Net Assets		
Unresitricted	2,457,048	4,395,133
Restricted	4,791,088	2,904,682
Total Net Assets	7,248,136	7,299,815
Total Liabilities & Net Assets	\$7,337,115	\$7,441,141





of Metro Denver

**Learn
more.**

girlsincdenver.org

**1499 Julian Street
Denver, CO 80204**

phone 303.893.4363

Staff

ADRIANNA MENCHACA, *Elementary
School Community Educator*

AMANDA CASTILLO, *High School
& College Community Educator*

ANDRI'NAE RHYMES,
Bold Beans Barista

ANGEL SHABAZZ, *Manager of
Middle School Programs*

AUTUMN RIVERA, *Career
Readiness Coordinator*

BETH ROLL, *Bookkeeper*

CHARLEEN RAMIREZ-MARES,
Director of Programs

DEJA RAMOS, *Bold Beans Barista*

DESTINEE PERKINS, *Manager
of Elementary School Programs*

DIA STONE, *Eureka! Program Coordinator*

DIANA DE LA ROSA, *Bold Beans Barista*

EMMA BARCENAS, *Community Educator*

ERIC GODOY, *Manager of
STEM Programs*

HEIDI VIELHABER, *Manager
of Volunteer Programs*

JAMIE NEWTON, *High School
& College Community Educator*

JENNY MARTIN, *Development
& Special Events Coordinator*

JENNY VALADEZ FRAIRE,
Bold Beans Barista

JESSICA MONROE, *Elementary
School Program Coordinator*

JJ DEARMORE, *Manager
of Social Enterprise*

JULIE KELLER, *Elementary
School Community Educator*

KAELIN "KK" TIPOTI-MCCOY,
Middle School Community Educator

KATIE ARMSTRONG,
Manager of Operations

LAILA JOHNSON, *Bold Beans Barista*

MANDI PACHECO, *Coffee Truck
& Food Service Coordinator*

MARICARMEN RODRIGUEZ JARA,
Bold Beans Barista

MELINA BIXLER, *Director of Training,
Evaluation & Advocacy*

NAISETT DE LEON GALVAN,
Bold Beans Barista

PATRICIA RAMIREZ, *Program
Administrative & Evaluation
Coordinator*

REILLY SANBORN,
Director of Finance

RUTH LOVATO, *Van Driver*

SARA HAZEL, *Director of Development*

SARAH MCGILL, *Manager of High
School and College Programs*

SONYA ULIBARRI, *President & CEO*

TORI CARROLL, *Middle School
Community Educator*

**As of April 1, 2020.*